

Technical Note: Prosilica GC Power Voltage Specification Update

Description

Beginning in April 2011, new AVT Prosilica GC cameras shipped from the Canadian manufacturing location will support an extended input power voltage range of 5-25 VDC. Existing customers are not affected by this capability and can continue to use the same power source. New customers that prefer a higher input voltage, such as 24 VDC can now use this to power the camera.

	Current	Cameras shipped after April 1 st
Prosilica GC Power input Voltage range	5-16 VDC	5-25 VDC

How to determine if my camera offers the extended input power voltage range

The serial number is used to identify cameras that can be powered using 5-16 VDC and cameras that support 5-25 VDC. The eighth character of the camera serial number is an identifier that a camera can support the extended input power voltage range. Any number other than “0” will indicate this is the case. In Fig 1 below the camera serial number is identified as 02-2171A-0XXXX. Since the eighth character is “0” we know this camera is limited to 5-16 VDC. Looking at Fig 2 below, the serial number is identified as 02-2171A-1XXXX. This camera supports 5-25 VDC.

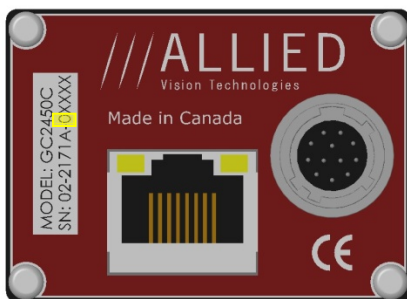


Fig 1. Prosilica GC back, 5-16VDC Input Power Voltage Range



Fig 2. Prosilica GC back, 5-25 VDC Input Power Voltage Range

WARNING

Supplying 17 VDC or more to the power input of cameras which do not support the extended input power voltage range will damage the camera. This failure is not covered under warranty

Additional Examples

Scenario #1:

- GC650 with the old voltage range would have the following p/n: 02-2110A-07794
- GC650 with the extended voltage range would have the following p/n: 02-2110A-17794

Scenario #2:

- GC1290 with the old voltage range would have the following p/n: 02-2185A-08574
- GC1290 with the extended voltage range would have the following p/n: 02-2185A-18574

Frequently Asked Questions

Q. Do I need a different power supply for these cameras?

A. No, the same power supply can be used

Q. Does this affect the price of the camera?

A. No

Q. Does this affect the performance of the camera?

A. No

Q. How does this affect the camera manual and other documentation?

A. Changes to the camera manual and related documentation will be introduced as soon as possible.

Q. What is the AVT Prosilica GC camera family, where are these cameras on the AVT website?

A. AVT Prosilica GC series link:

<http://www.alliedvisiontec.com/us/products/cameras/gigabit-ethernet/prosilica-gc.html>

For further information, please contact support@alliedvisiontec.com

Disclaimer

Due to continual product development, technical specifications may be subject to change without notice. All trademarks are acknowledged as property of their respective owners. We are convinced that this information is correct. We acknowledge that it may not be fully comprehensive. Nevertheless we cannot be held responsible for any damage in equipment or subsequent loss of data or whatsoever in consequence of following the application note. Copyright © 2011.

This document was prepared by the staff of Allied Vision Technologies Canada ("AVT") and is the property of AVT, which also owns the copyright therein. All rights conferred by the law of copyright and by virtue of international copyright conventions are reserved to AVT. This document must not be copied, or reproduced in any material form, either wholly or in part, and its contents and any method or technique available there from must not be disclosed to any other person whatsoever without the prior written consent of AVT.